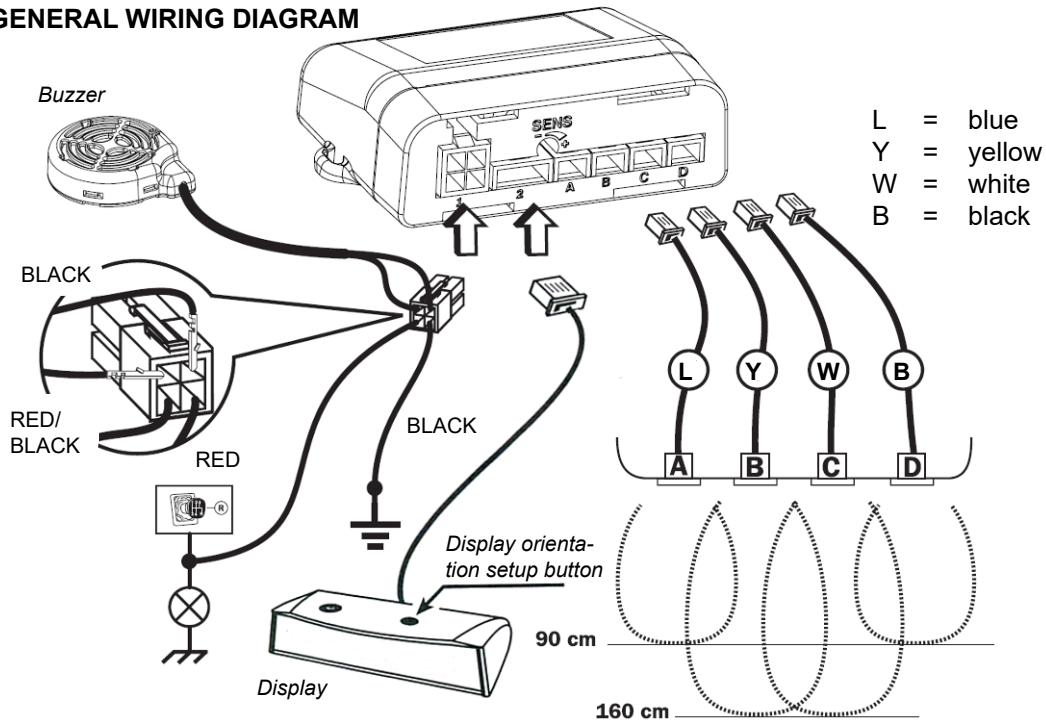
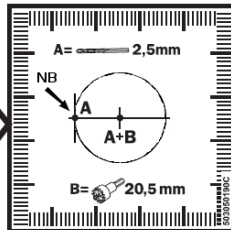
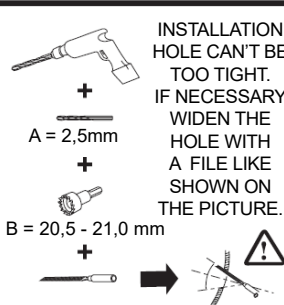
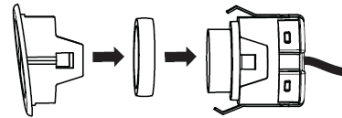
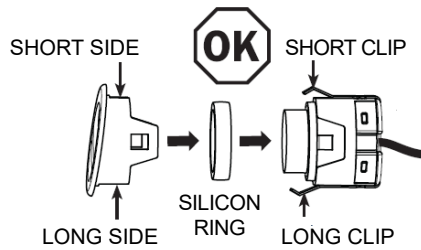


Meta Easypark quick installation manual

GENERAL WIRING DIAGRAM



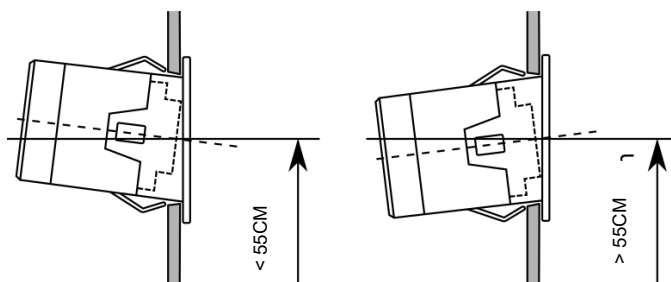
META EASYPARK ASSEMBLING AND INSTALLATION



POSITIONING KEY (*) IS ALWAYS FACING SIDWAYS!

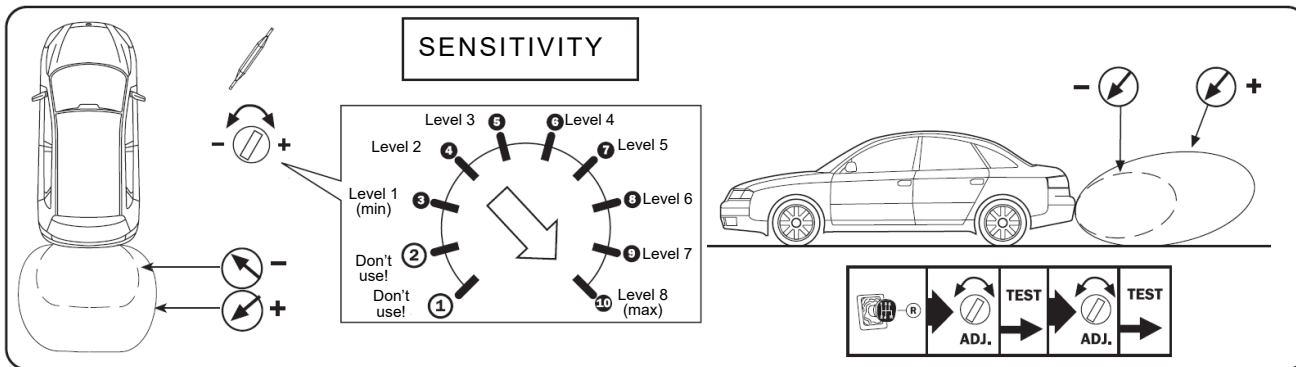
MAKE A GROOVE FOR POSITIONING KEY, MARKED BY THE LETTER "A" ON THE PICTURE LEFT

IF THE SENSOR INSTALLATION HEIGHT IS MORE THAN 55 CM, POINT THE SENSOR DOWN, IF THE INSTALLATION HEIGHT IS BELOW 55 CM, POINT UP.



CALIBRATING SENSITIVITY

The area of protection can be adjusted via the trimmer on the front of the control unit, on the basis of the customer requirements or the structure of the bumpers.



ADJUSTING THE DEFAULT OFFSET

Offset is the area close to bumper where an obstacle is indicated by a continuous buzzer sound. It's needed to increase offset for example if the car have towing hook OR spare wheel on the rear door. The product is programmed with a 30 cm OFFSET which can be set from a minimum of 25 cm to a maximum of 60 cm.

1. Unplug the main connector from the EasyPark control unit, turn on the ignition and engage the reverse gear.
2. Set the trimmer on position 2.
3. Start the recording procedure by plugging in the main connector, wait the first Beep for the system activation followed by the double start Beep and immediately move the trimmer to the new OFFSET position (see picture below).
4. Wait for a double Beep (about 10 seconds after START) confirming that the new OFFSET has been saved.
5. Turn OFF the ignition and after this operation remember to turn the trimmer back into the position chosen for system sensitivity.

To change the OFFSET again repeat the procedure starting from point 1.

MASKING THE DETECTION OF TOW HOOK OR OTHER OBSTACLES

If obstacles are detected when the system is activated (e.g. tow hook) they can be excluded through the masking procedure described below:

1. Check that there are no objects near the car (at least 1 mt clearance).
2. Set the control unit for masking, by setting the trimmer on the step 1 (see fig. 9).
3. Start the engine, engage the reverse and wait for the system activation. Beep followed by a single Beep meaning the procedure has started.
4. Wait for the double Beep confirming masking (about 60 sec.) and then switch the vehicle off and **turn the trimmer back into the position chosen previously for system sensitivity.**

